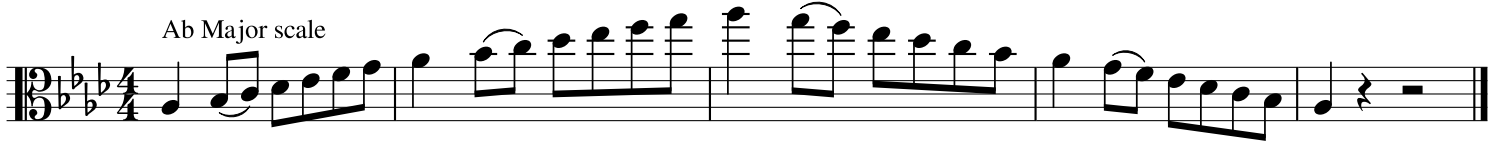
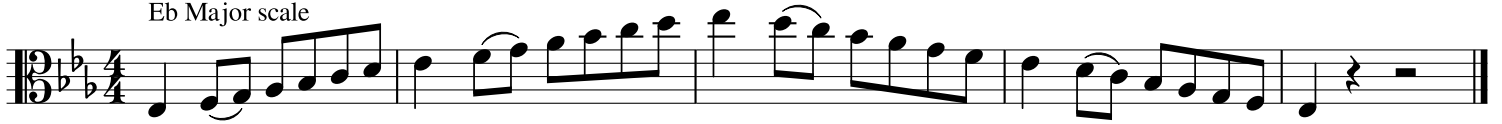


Major Scales for Viola

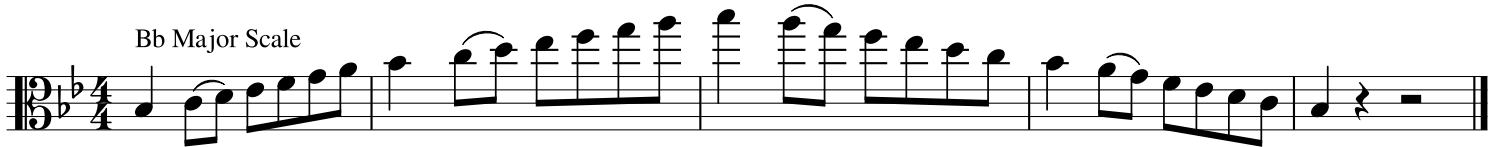
Ab Major scale



Eb Major scale



Bb Major Scale



F Major scale



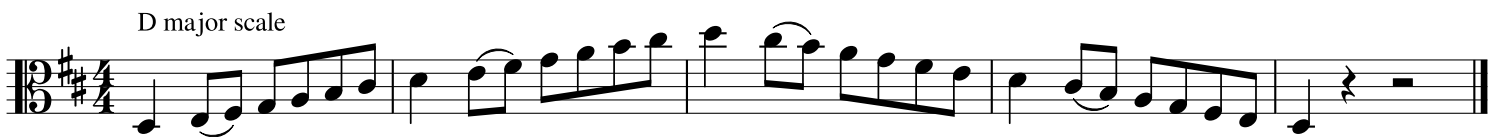
C Major scale



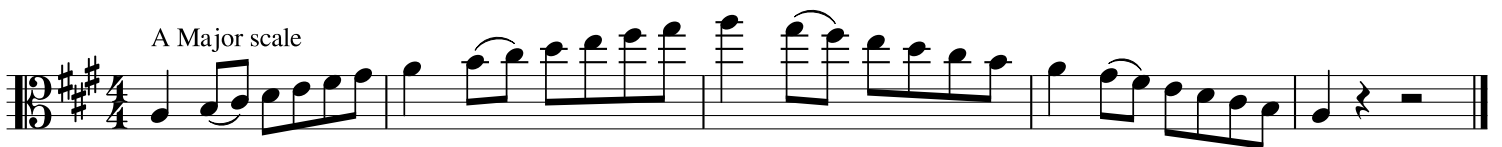
G Major scale



D major scale



A Major scale



E Major scale



Major Scales for Cello

Ab Major scale

Musical notation for the Ab Major scale in bass clef, 4/4 time signature. The scale is written in a single line, starting on Ab and ending on Ab. The notes are: Ab, Bb, C, D, Eb, F, G, Ab. The scale is played in a single octave, with a repeat sign at the end.

Eb Major scale

Musical notation for the Eb Major scale in bass clef, 4/4 time signature. The scale is written in a single line, starting on Eb and ending on Eb. The notes are: Eb, F, G, Ab, Bb, C, D, Eb. The scale is played in a single octave, with a repeat sign at the end.

Bb Major Scale

Musical notation for the Bb Major Scale in bass clef, 4/4 time signature. The scale is written in a single line, starting on Bb and ending on Bb. The notes are: Bb, C, D, Eb, F, G, Ab, Bb. The scale is played in a single octave, with a repeat sign at the end.

F Major scale

Musical notation for the F Major scale in bass clef, 4/4 time signature. The scale is written in a single line, starting on F and ending on F. The notes are: F, G, Ab, Bb, C, D, E, F. The scale is played in a single octave, with a repeat sign at the end.

C Major scale

Musical notation for the C Major scale in bass clef, 4/4 time signature. The scale is written in a single line, starting on C and ending on C. The notes are: C, D, E, F, G, A, B, C. The scale is played in a single octave, with a repeat sign at the end.

G Major scale

Musical notation for the G Major scale in bass clef, 4/4 time signature. The scale is written in a single line, starting on G and ending on G. The notes are: G, A, B, C, D, E, F#, G. The scale is played in a single octave, with a repeat sign at the end.

D major scale

Musical notation for the D major scale in bass clef, 4/4 time signature. The scale is written in a single line, starting on D and ending on D. The notes are: D, E, F#, G, A, B, C#, D. The scale is played in a single octave, with a repeat sign at the end.

A Major scale

Musical notation for the A Major scale in bass clef, 4/4 time signature. The scale is written in a single line, starting on A and ending on A. The notes are: A, B, C#, D, E, F#, G#, A. The scale is played in a single octave, with a repeat sign at the end.

E Major scale

Musical notation for the E Major scale in bass clef, 4/4 time signature. The scale is written in a single line, starting on E and ending on E. The notes are: E, F#, G#, A, B, C#, D#, E. The scale is played in a single octave, with a repeat sign at the end.

Major Scales for Double Bass

Ab Major scale

Musical notation for the Ab Major scale in 4/4 time, starting on the 8th fret. The scale is written in bass clef with a key signature of three flats (Bb, Eb, Ab). The notes are: Ab, Bb, C, D, Eb, F, G, Ab. The notation includes slurs and accents for phrasing.

Eb Major scale

Musical notation for the Eb Major scale in 4/4 time, starting on the 8th fret. The scale is written in bass clef with a key signature of three flats (Bb, Eb, Ab). The notes are: Eb, F, G, Ab, Bb, C, D, Eb. The notation includes slurs and accents for phrasing.

Bb Major Scale

Musical notation for the Bb Major Scale in 4/4 time, starting on the 8th fret. The scale is written in bass clef with a key signature of two flats (Bb, Eb). The notes are: Bb, C, D, Eb, F, G, Ab, Bb. The notation includes slurs and accents for phrasing.

F Major scale

Musical notation for the F Major scale in 4/4 time, starting on the 8th fret. The scale is written in bass clef with a key signature of one flat (Bb). The notes are: F, G, Ab, Bb, C, D, E, F. The notation includes slurs and accents for phrasing.

C Major scale

Musical notation for the C Major scale in 4/4 time, starting on the 8th fret. The scale is written in bass clef with a key signature of no sharps or flats. The notes are: C, D, E, F, G, A, B, C. The notation includes slurs and accents for phrasing.

G Major scale

Musical notation for the G Major scale in 4/4 time, starting on the 8th fret. The scale is written in bass clef with a key signature of one sharp (F#). The notes are: G, A, B, C, D, E, F#, G. The notation includes slurs and accents for phrasing.

D major scale

Musical notation for the D major scale in 4/4 time, starting on the 8th fret. The scale is written in bass clef with a key signature of two sharps (F#, C#). The notes are: D, E, F#, G, A, B, C#, D. The notation includes slurs and accents for phrasing.

A Major scale

Musical notation for the A Major scale in 4/4 time, starting on the 8th fret. The scale is written in bass clef with a key signature of three sharps (F#, C#, G#). The notes are: A, B, C#, D, E, F#, G#, A. The notation includes slurs and accents for phrasing.

E Major scale

Musical notation for the E Major scale in 4/4 time, starting on the 8th fret. The scale is written in bass clef with a key signature of four sharps (F#, C#, G#, D#). The notes are: E, F#, G#, A, B, C#, D#, E. The notation includes slurs and accents for phrasing.