

CD

7: SPLIT TRACK/MELODY

8: FULL STEREO TRACK

C VERSION

JAZZ N' SAMBA

(SO DANCO SAMBA)

ORIGINAL TEXT BY VINICIUS DE MORAES
MUSIC BY ANTONIO CARLOS JOBIM

SAMBA
DRUMS 3

C_{MA7}

mf

D^9 D_{MI}^9

G^9 $C6/9$ D_{MI}^7 $G+7$ 1. 2.

G_{MI}^7 C^{13} F^6

A_{MI}^7 D^9 A_{MI}^7 D^9 G^9 $G+7$

C_{MA}^7 D^9

D_{MI}^9 G^9 TO CODA $C6/9$ D_{MI}^7 $G+7$

* SOLOS
C_{MA}7

D₉

D_{mi}⁹ G⁹ C^{6/9} 1. D_{mi}⁷ G⁺⁷ 2. (C^{6/9})

G_{mi}⁷ C¹³ F⁶

A_{mi}⁷ D⁹ A_{mi}⁷ D⁹ G⁹ G⁺⁷

C_{MA}⁷ D⁹


D_{mi}⁹ G⁹ C^{6/9} D_{mi}⁷ G⁺⁷ mf

D.S. AL COD
LAST TIM
WITH REPEA

(BACK TO * FOR MORE SOLOS)

♩ CODA C^{6/9} A^{+7(#9)} D_{mi}⁹ G⁹

C^{6/9} E_b^{9(#11)} D_{mi}⁹ G⁹ C^{6/9}

 : SPLIT TRACK/MELODY
 : FULL STEREO TRACK

JAZZ N' SAMBA

(SO DANCO SAMBA)

ORIGINAL TEXT BY VINICIUS DE MORAES
MUSIC BY ANTONIO CARLOS JOBIM

7: C VERSION

SAMBA
DRUMS 3

$\frac{3}{4}$ C^{MA7}

mf

D⁹

D^{MI9}

G⁹ C^{6/9} 1. D^{MI7} G⁺⁷ 2.

G^{MI7} C¹³ F⁶

A^{MI7} D⁹ A^{MI7} D⁹ G⁹ G⁺⁷

C^{MA7} D⁹

D^{MI9} G⁹ TO CODA C^{6/9} D^{MI7} G⁺⁷

* SOLOS
CMA7

D9



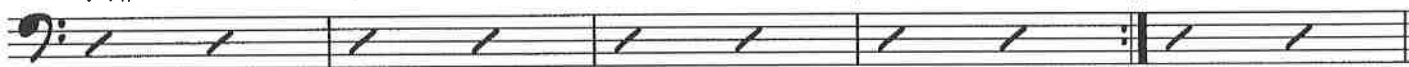
Dmi9

G9

C6/9

1. Dmi7 G+7

2. (C6/9)



Gmi7

C13

F6



Ami7

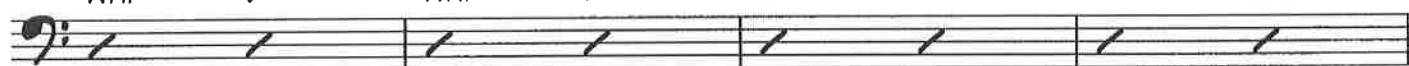
D9

Ami7

D9

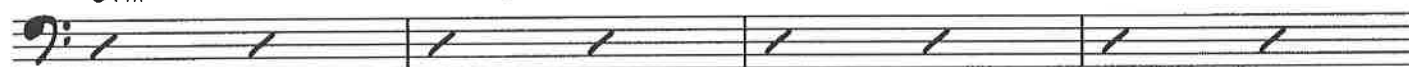
G9

G+7



CMA7

D9



Dmi9

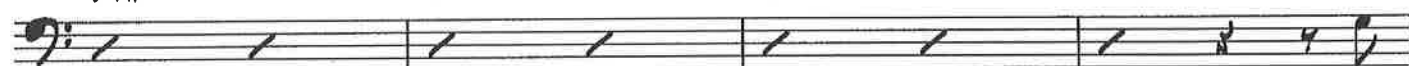
G9

C6/9

Dmi7

G+7

D.S. AL CODA
LAST TIME
WITH REPEAT



mf

(BACK TO * FOR MORE SOLOS)

⊕ CODA
C6/9

A+7(#9)

Dmi9

G9



C6/9

Eb9(#11)

Dmi9

G9

C6/9
^



CD

7: SPLIT TRACK/MELODY
B: FULL STEREO TRACK

JAZZ N' SAMBA

(SO DANCO SAMBA)

ORIGINAL TEXT BY VINICIUS DE MORAES
MUSIC BY ANTONIO CARLOS JOBIM

B \flat VERSION

SAMBA

DRUMS 3

$\frac{2}{4}$ D \flat MA \flat 7

* SOLOS
 D^{MA}7 E⁹

E^m1⁹ A⁹ D^{6/9} 1. E^m1⁷ A⁺⁷ 2. (D^{6/9})

A^m1⁷ D¹³ G⁶

B^m1⁷ E⁹ B^m1⁷ E⁹ A⁹ A⁺⁷

D^{MA}7 E⁹

E^m1⁹ A⁹ D^{6/9} E^m1⁷ A⁺⁷ D.S. AL CODA LAST TIME WITH REPEAT

mf
 (BACK TO * FOR MORE SOLOS)

⊕ CODA D^{6/9} B⁺⁷(#9) E^m1⁹ A⁹

D^{6/9} F⁹(#11) E^m1⁹ A⁹ D^{6/9}

CD

- 7 : SPLIT TRACK/MELODY
- 8 : FULL STEREO TRACK

EP VERSION

JAZZ N' SAMBA

(SO DANCO SAMBA)

ORIGINAL TEXT BY VINICIUS DE MORAES
MUSIC BY ANTONIO CARLOS JOBIM

SAMBA
DRUMS 3

mf A_{MA}7

B⁹ B_{M1}⁹

E⁹ A_{6/9} 1. B_{M1}⁷ E+7 2.

E_{M1}⁷ A¹³ D₆

F_{M1}⁷ B⁹ F_{M1}⁷ B⁹ E⁹ E+7

A_{MA}7 B⁹

B_{M1}⁹ E⁹ TO CODA A_{6/9} B_{M1}⁷ E+7

* SOLOS
A_MA⁷ B⁹

B_M1⁹ E⁹ A^{6/9} 1. B_M1⁷ E⁺⁷ 2. (A^{6/9})

E_M1⁷ A¹³ D⁶

F_M1⁷ B⁹ F_M1⁷ B⁹ E⁹ E⁺⁷

A_MA⁷ B⁹

B_M1⁹ E⁹ A^{6/9} B_M1⁷ E⁺⁷ D.S. AL CODA LAST TIME WITH REPEAT

mf
(BACK TO * FOR MORE SOLOS)

⊕ CODA A^{6/9} F_M+⁷(#9) B_M1⁹ E⁹

A^{6/9} C⁹(#11) B_M1⁹ E⁹ A^{6/9}

BASS

ALL-VIRGINIA JAZZ ENSEMBLE AUDITION ETUDE

BASED ON THE CHANGES TO "AUTUMN LEAVES"

CRAIG SKEFFINGTON

SWING ♩ = 160

Chord progression: CMIN⁹ F¹³ B^b₉ E^b₆

5 AMIN^{7(b5)} D⁺7(♯9) D⁺7(b9) GMIN⁷ DMIN^{7(b5)} G^{7(b9)}

9 CMIN⁹ F¹³ B^b₉ E^bMAJ^{7(ADD♯11)}

15 AMIN^{7(b5)} D⁺7(♯9) D⁺7(b9) GMIN⁷

17 AMIN^{7(b5)} D^{7(b9)} GMIN⁹

21 CMIN⁹ F¹³ B^bMAJ⁷ E^bMAJ^{7(♯11)}

25 AMIN^{7(b5)} D⁺7(♯9) D^{7(b9)} GMIN¹¹ F^{♯7(♯11)} FMIN¹¹ E⁹

29 E^bMAJ⁷ AMIN^{7(b5)} D⁺7(♯9) GMIN⁹ AMIN^{7(b5)} D^{7(b5)} D^b13 CMIN⁹

ALL VIRGINIA JAZZ ENSEMBLE - 2008

RHYTHM SECTION AUDITION MATERIALS

APPROPRIATE STYLES - FUNK

FUNK MM=100

BASS

C MIN6 EbMA7 AbMA7 G7#9#5 C MIN6 EbMA7 AbMA7 G7#9#5

1 2 3 4

ALL VIRGINIA JAZZ ENSEMBLE - 2008

RHYTHM SECTION ADDITION MATERIALS

APPROPRIATE STYLES - SAMBA

SAMBA MM = 120

BASS

Fmaj7 Gmin7 C9 Fmaj7 Bbm7 Eb9

1 2 3 4

BASS

Amin7 Ab7 Gmin7 C9 Fmaj7 Ab7 Db7

5 6 7 8